

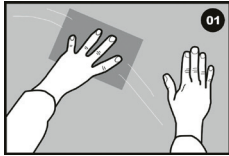
Please read instructions fully before starting to hang your map

Size : 124" x 91.34"

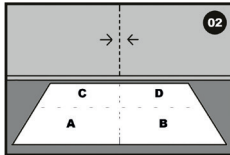


Instructions for use.

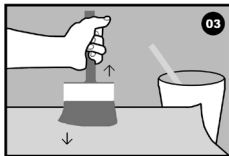
Requirements : Wallpaper paste, a brush or a roller to apply the paste, a bucket, cutting tool and/or a pair of scissors, level, a pencil, a ruler and/or a paste applicator, a sponge and/or a paste brush.



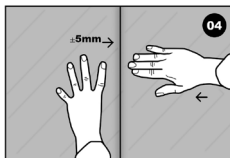
01 The Backdrop : Preparing the wall is an essential stage; nearly half of all failed installations are due to poor preparation of the backdrop. The base must therefore be: clean, dry, hard, smooth and reasonably porous.



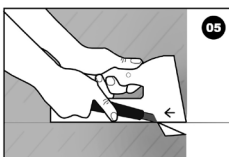
02 Preparation and alignment : Our products are 91.34 inches high and 124 inches wide. Using the level, the ruler and the pencil, mark out the place for the picture on the wall and in particular, the center of the picture. Place the sheets on the floor to see the order in which they must be applied. **Please note; each sheet is designed with an overlap for ease of hanging, and overlaps with the previous sheet pasted on the wall.** Follow the instructions on the plan for the direction in which paste must be applied.



03 Preparing the paste and sticking the sheets : 2.12 ounces of paste to 1/2 gallon of water. For a better consistency, slowly pour the paste across the rim of the bucket, rather than pouring directly into the water while stirring. Let the mixture settle for 20 minutes and then mix thoroughly. Apply the paste to the reverse of the sheets using the brush. Fold the two edges of the pasted sheet towards the center. Let it settle for 2 minutes for the paste to soak through.



04 Hanging : Hang the sheets starting with sheet A. Apply using a damp sponge, starting with the center of the paper and moving out to the edges, from the top to the bottom. Using the wallpaper paste brush, press out air bubbles from top to bottom and from the center towards the outside. Smaller air bubbles will disappear automatically as the paste dries. Use the same technique for all sheets. Be sure to take the overlapping of the sheets into account.



05 Cutting : If necessary, cut off the excess paper using the ruler and the cutting tool. Delicately clean away any excess paste using a damp sponge.